

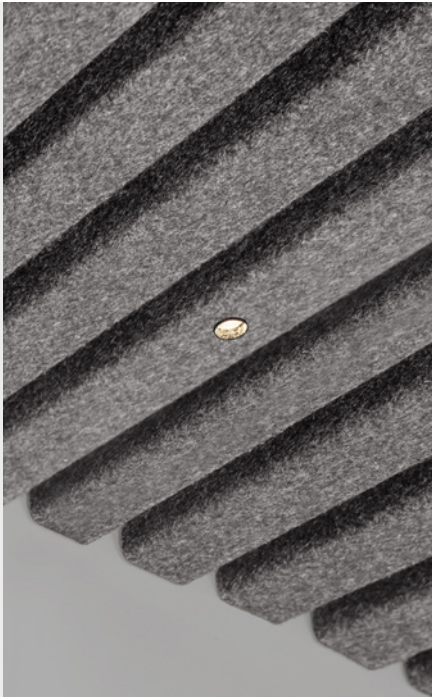
FEATURES

- Bartenbach 'Dark Light' technology
- The lighting solution disappears into the ceiling
- Protected by 2 patents

**Bartenbach**  
lighting optics



Developed in  
cooperation with  
**HunterDouglas**



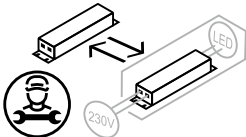
Felta integrated in HeartFelt® Linear

Felta  
Fixed

SPECIFICATIONS

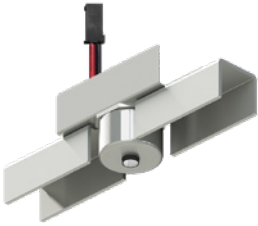
Beam angle	60° (35° on request)
Fixture material	Solid aluminium
CCT	2700K / 3000K / 4000K
CRI	93
UGR	<10*
IK rate	IK09
IP rate	IP20
Operating temperature	-20°C / +45°C
Safety marks	EN60598 / EN62031 / EN62471
Colour consistency	MacAdam step 3
Warranty	7 years
Safety class	III
Energy class	These products contain a light source of energy efficiency class F (2700K/3000K) / E (4000K)

This luminaire contains built-in LED lamps. There are no exchangeable parts inside the luminaire. EU 874/2012  
\* This luminaire is glare free because the Light Emitting Surface is completely integrated behind the tube opening.  
According to the CIE 147-2002 norms it is not possible to calculate a reliable UGR value for this kind of optical solution.



## FELTA L4CS

CRI93 / max 700 mA



## ITEM SPECIFICATIONS

Description	Item code	Input	Vf	W	Lm	Lm/W	CRI (typ.)	Pf	Ripple	Inrush current	B-16A Fuse	Safety class
Felta L4CS max 475 Lm 2700K CRI93 60°	FL3X03AL27E2	max 700mA	11,7	8,2	475	58	93	x	x	x	x	III
Felta L4CS max 525 Lm 3000K CRI93 60°	FL3X03AL30E2	max 700mA	11,7	8,2	525	64	93	x	x	x	x	III
Felta L4CS max 575 Lm 4000K CRI93 60°	FL3X03AL40E2	max 700mA	11,7	8,2	575	70	93	x	x	x	x	III

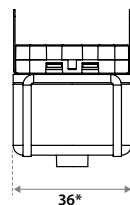
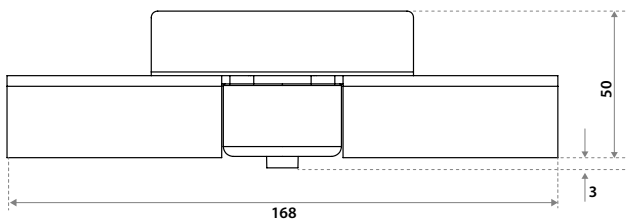
Description	Energy class	Weight	Dimensions carton	Quantity per carton	Expected Lifetime			Reported Lifetime*		
					L70B10	L80B10	L90B10	L70B10	L80B10	L90B10
Felta L4CS max 475 Lm 2700K CRI93 60°	F	128 gr	390x360x330 mm	18 pcs	177.000 hrs	113.000 hrs	51.000 hrs	>102.000 hrs	>102.000 hrs	51.000 hrs
Felta L4CS max 525 Lm 3000K CRI93 60°	F	128 gr	390x360x330 mm	18 pcs	177.000 hrs	113.000 hrs	51.000 hrs	>102.000 hrs	>102.000 hrs	51.000 hrs
Felta L4CS max 575 Lm 4000K CRI93 60°	E	128 gr	390x360x330 mm	18 pcs	177.000 hrs	113.000 hrs	51.000 hrs	>102.000 hrs	>102.000 hrs	51.000 hrs

All values are measured at 230V (+/- 7%). \*Based on 17.000hrs of LM80 testing at 700mA and a Tc85 °C.

## CHOOSE YOUR LV LUMEN OUTPUT

	mA	1 spot		4 spots		Lumen Output			Lumen / Watt			Driver types		
		Vf	W	Vf	W	2700K	3000K	4000K	2700K	3000K	4000K	KGP No dim	KGP Dali	TCI Casambi
Special request	350	11,2	3,9	44,8	15,6	225	250	275	57	64	70	CC36W150-900	CC36W150-900	142047
Special request	500	11,3	5,7	45,2	22,8	375	400	425	66	70	75	CC36W150-900	CC36W150-900	142047
Standard	700	11,4	8,0	45,6	32,0	475	525	575	58	64	70	CC36W150-900	CC36W150-900	142047

## DIMENSIONS

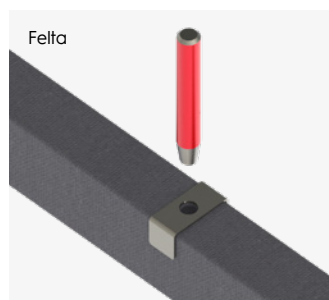
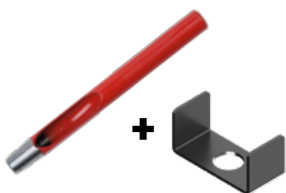


\*Also available with 27,8mm. Ask our MIYO department.

## ITEM SPECIFICATIONS (ACCESSORIES)

Description	Specification	Item code
Hole puncher	Felta Groovy 10mm incl. alignment tool	001J03RE0000

Hole puncher Felta/Groovy



By clamping a block of wood in a vice, it is possible to make a hole in the slot yourself using a hole punch and an alignment tool.

For very large projects check Hunter Douglas to make the holes directly in the panels.

PSU (INCL. L4CS CABLE SET 4L)



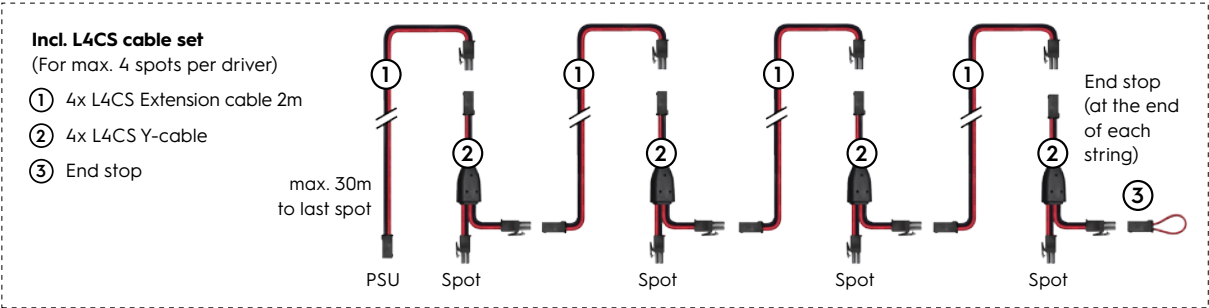
**PSU KGP 36W No dim NFC\***  
163x30x21 mm  
Exp. lifespan 100.000 hrs



**PSU KGP 36W Dali NFC\***  
163x30x21 mm  
Exp. lifespan 100.000 hrs



**PSU TCI 38W Casambi NFC\***  
147x44x22 mm  
Exp. lifespan 100.000 hrs



Item specifications (PSU)

Driver types	Supplier name	Item code	Input	Watt	Max mA	Max V <sub>f</sub>	Pf	Eff.	Inrush current	B-16A Fuse
PSU 36W 700mA No-dim KGP + L4CS cable set 4L	CC36W150-900	05PH03MLMA04	220-240V AC/DC	36W	150-900	50	>0.95	88%	8,5A 16µS	59 pcs
PSU 36W 700mA Dali KGP + L4CS cable set 4L	CC36W150-900	05PJ03MLMA04	220-240V AC/DC	36W	150-900	50	>0.95	88%	8,5A 16µS	59 pcs
PSU 38W 700mA Casambi TCI + L4CS cable set 4L	142047	05ZF03MLMA04	220-240V AC/DC	38W	150-1050	54	0.95	89%	5A 50µS	50 pcs

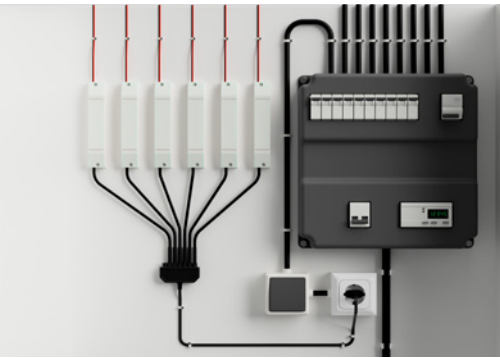
All values are measured at 230V (+/- 7%). \*Dali is not suitable for the HV Distributor system.

\*NFC INSTRUCTION VIDEO



KGP CLO in development  
TCI NFC & CLO in development

INSTALLATION PSU



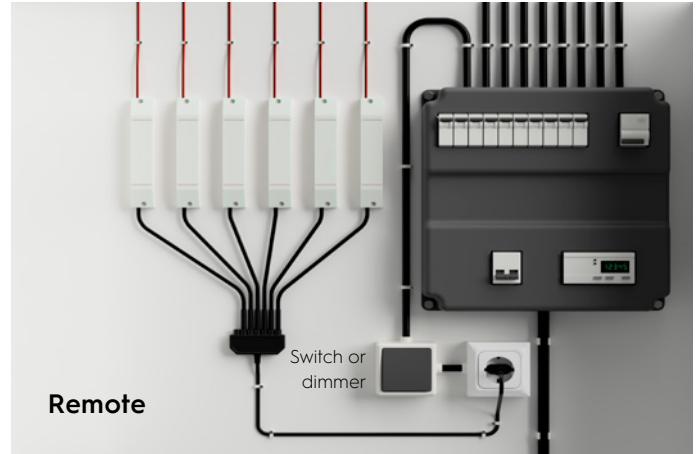
**Remote**  
It is recommended to install the power supplies in an easily accessible place. By using the LV extension cable, the distance to the last spot can be increased to a maximum of 30 metres.

## INSTALLATION PSU

We recommend placing the drivers decentrally, but if this is not possible, it is better to place a mains filter on the power group because it might be difficult to replace a defective driver. For instance: Littlefuse LSP05G240SX333 or Littlefuse LSP05G277SX333

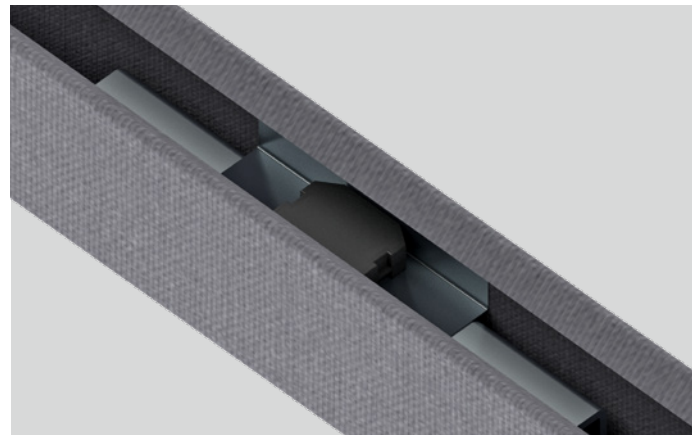
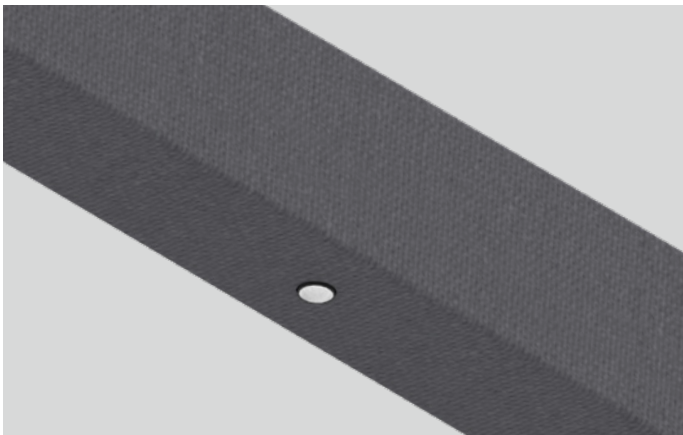


The drivers can be attached to the cross rail with double-sided tape (not provided). Due to the difficult accessibility of the power supply, we recommend using a mains filter to increase the lifespan of the power supply.



It is recommended to install the power supplies in an easily accessible place. By using the LV extension cable, the distance to the last spot can be increased to a maximum of 30 metres.

## FELTA FOR TEXTILE HEARTFELT® LINEAR



This version is intended for integration into the TEXTILE Heartfelt® linear. Only the tube of the optics protrudes through a hole in the felt that can be made in the panel; the rest of the luminaire is completely invisible. The top bracket not only provides extra cooling but also ensures that the optics remain properly positioned in the hole.

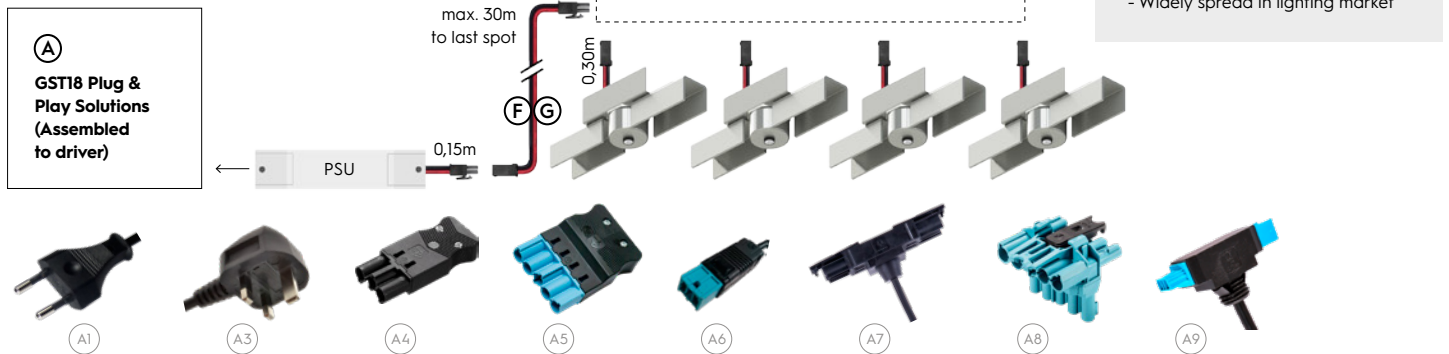
## PLACING FELTA IN TEXTILE HEARTFELT® LINEAR

Position black  
tube into the hole



Scan de QR for more  
info and a video.

## PLUG & PLAY CABLE SYSTEM 3/5P

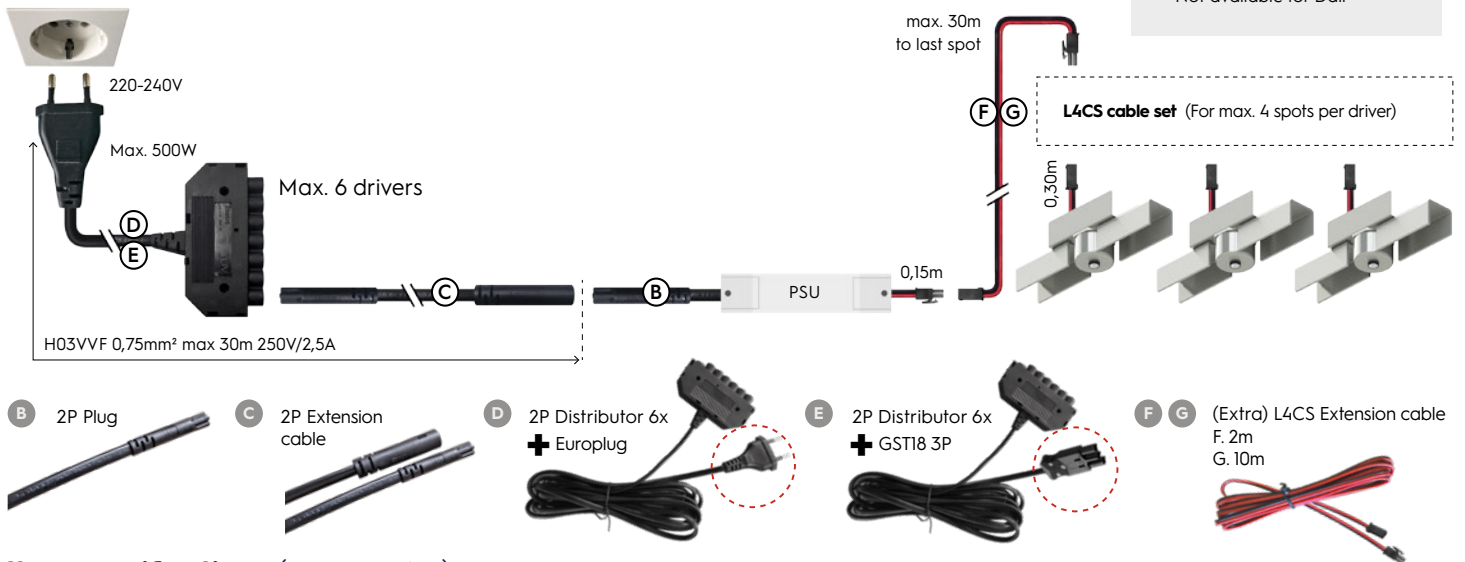


### Item specifications (accessories)

Description	Class	Length	Item code	Description	Class	Length	Item code
(A1) Euro plug incl. cable	II	2.0 m	015203BL1200	(A6) BST14i male Dali incl. cable	III	0.5 m	095203BL0000
(A3) UK plug incl. cable	II	2.0 m	0A5203BL1200	(A6) BST14i male Dali incl. cable	III	3.0 m	095203BL1500
(A4) 3P GST18 male incl. cable 2x0.75mm²	II	0.3 m	455203BL0000	(A7) 3P GST18 T-splitter male incl. cable	II	0.2 m	459203BL0000
(A4) 3P GST18 male incl. cable 2x0.75mm²	II	3.0 m	455203BL1500	(A8) 5P GST18 T-splitter male 1-10V/Dali	I / II	x	659203BU0000
(A5) 5P GST18 male 1-10V/Dali incl. cable 4x0,75mm²	II	0,3 m	655203BL0000	(A9) BST14i T-splitter male 1-10V/Dali incl. cable	III	0,2 m	099203BL0000
(A5) 5P GST18 male 1-10V/Dali incl. cable 4x0,75mm²	II	3,0 m	655203BL1500				

## DISTRIBUTOR SYSTEM 2P\*

\*Not for Dali.



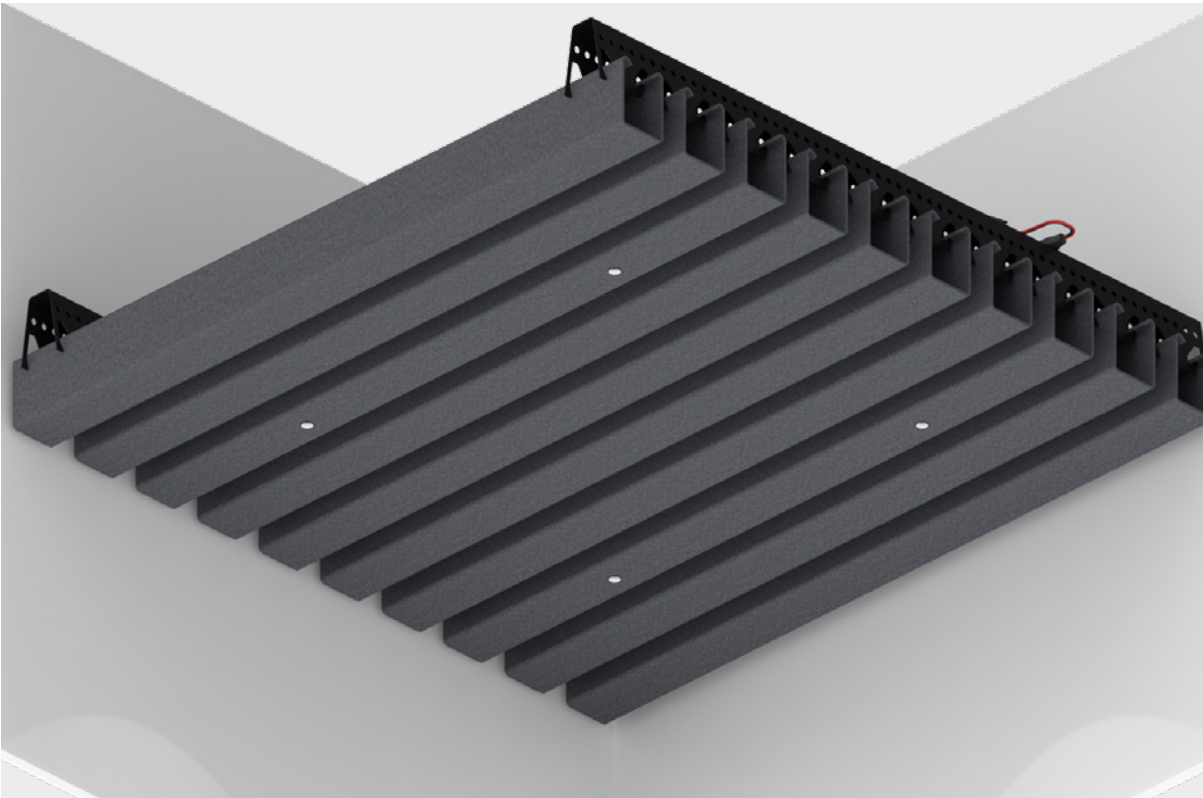
### Item specifications (accessories)

Description	Specification	Class	Length	Item code
(B) 2P Plug 0,15m *	HV 0,15m male (0,75mm²)	II	0,15 m	615203BL1B02
(C) 2P Extension cable	HV Ø7,6mm 2m m/f (0,75mm²)	II	2.0 m	6F5203BL1202
(D) 2P Distributor 6x + Europlug	HV Ø7,6mm 6x + cable 3m 2,5A	II	3,0 m	665203BL2502
(E) 2P Distributor 6x + GST18 3P	HV Ø7,6mm 6x + cable 3m 2,5A	II	3,0 m	665203BL1502
(F) L4CS Extension cable 2m	LV 2m m/f (0,34mm²)	II	2,0 m	6B5203BL1202
(G) L4CS Extension cable 10m	LV 10m m/f (0,34mm²)	II	10,0 m	6E5203BL1202

\*Assembled to driver, not for Dali drivers.



**APPLICATION**



Frontside  
Heartfelt®  
linear  
with Felta



Backside  
Heartfelt®  
linear  
with Felta